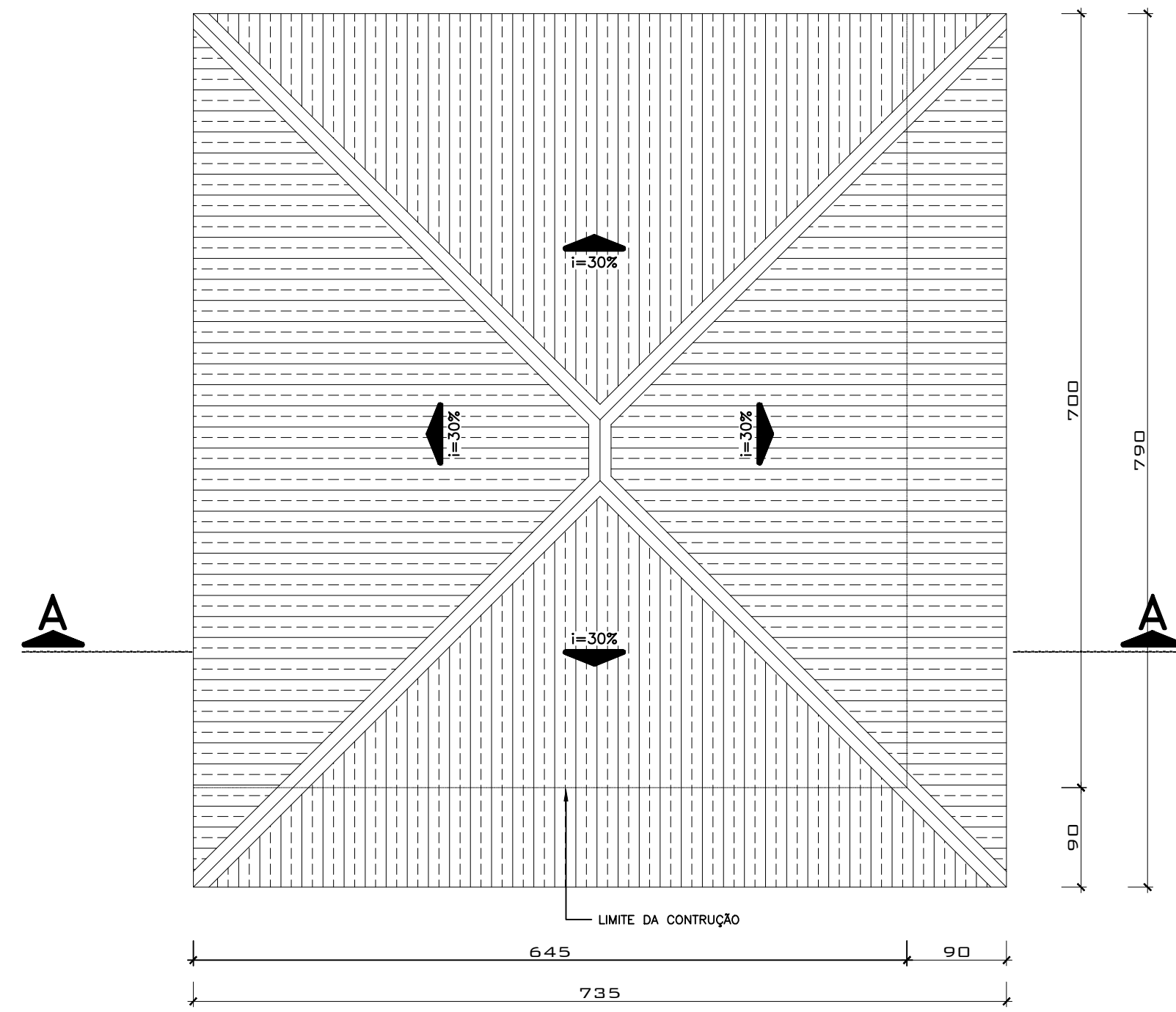
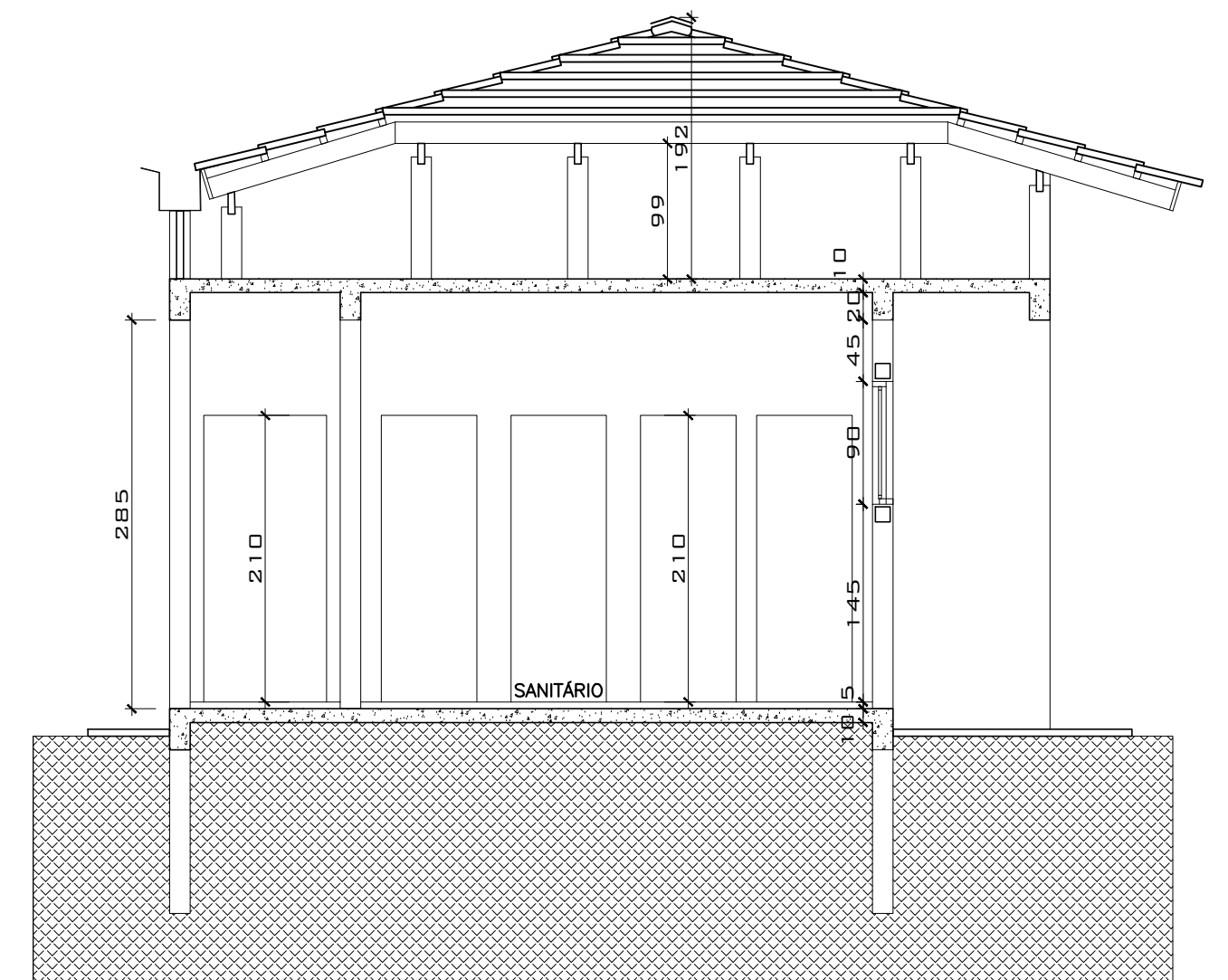


1 PLANTA BAIXA SANITÁRIOS
A=45,15m² ESCALA: 1/75

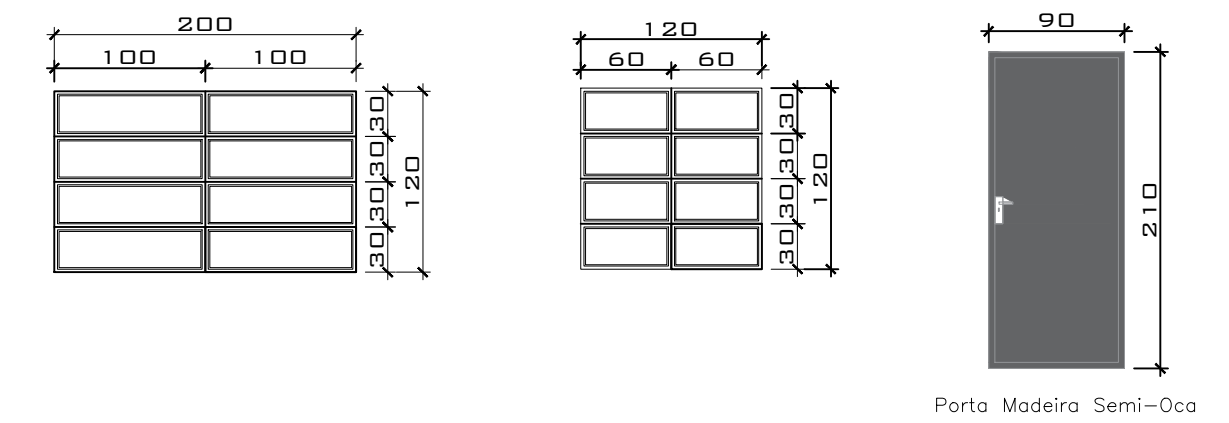


2 PLANTA DE COBERTURA
ÁREA: 58,06 M²
ESCALA: 1/75

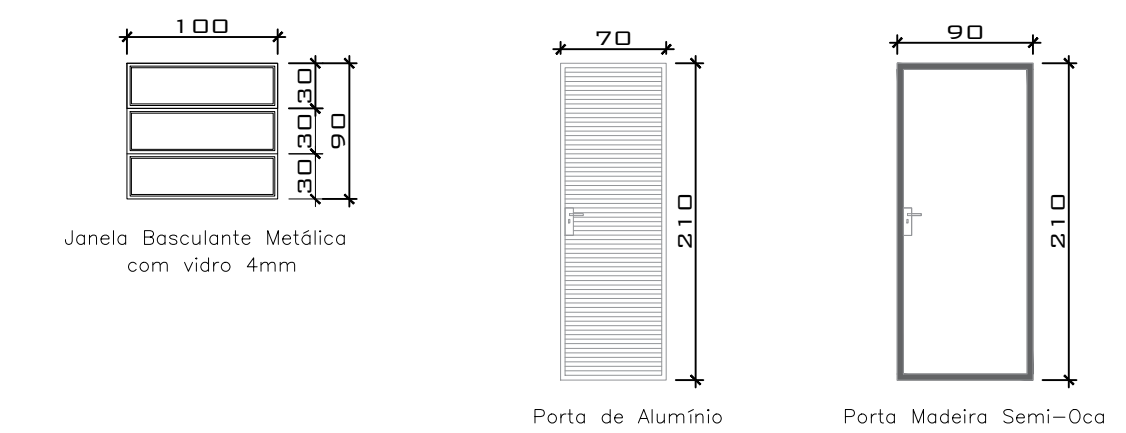


3 CORTE A-A
ESCALA: 1/75

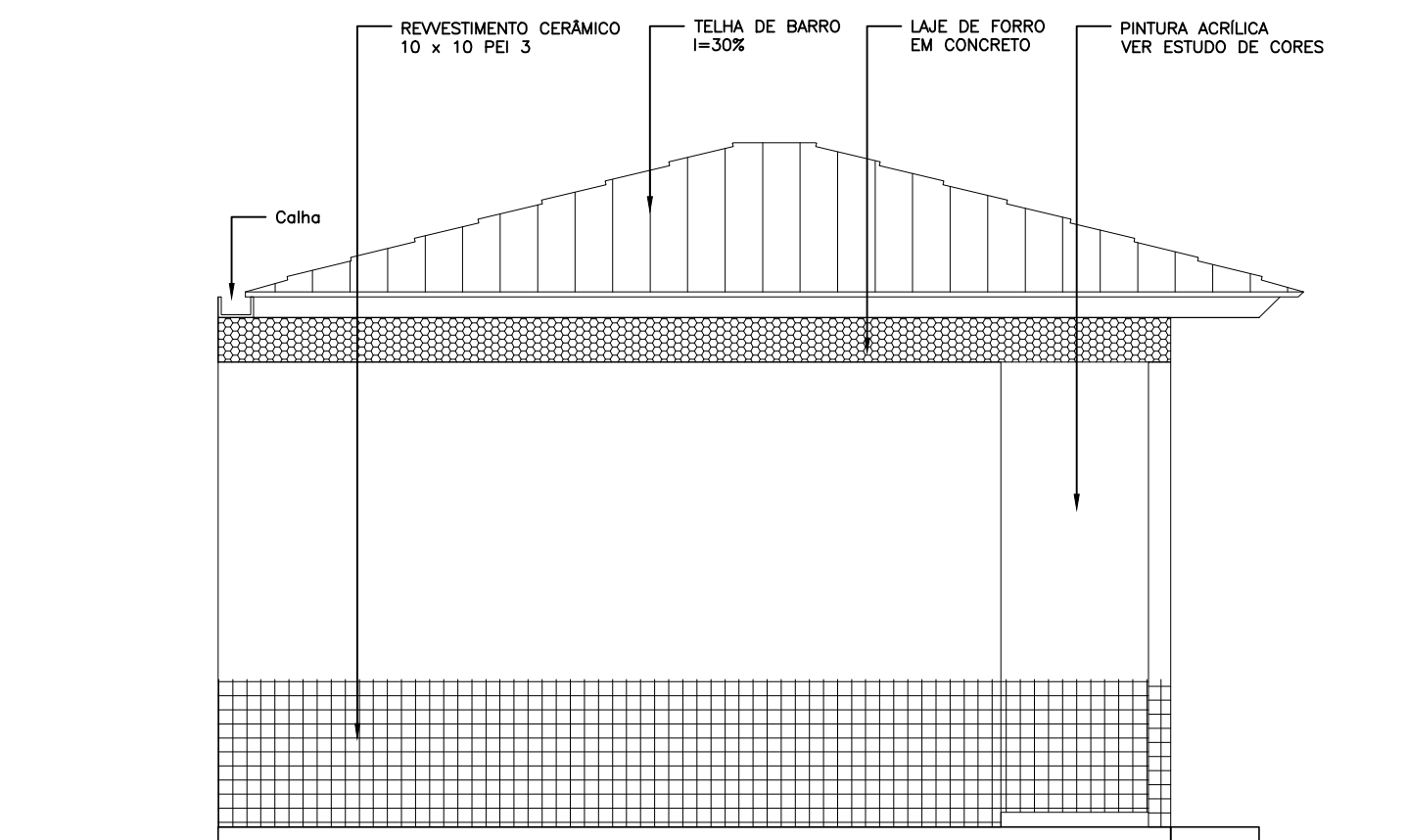
DETALHAMENTO DAS ESQUADRIAS SANITÁRIO



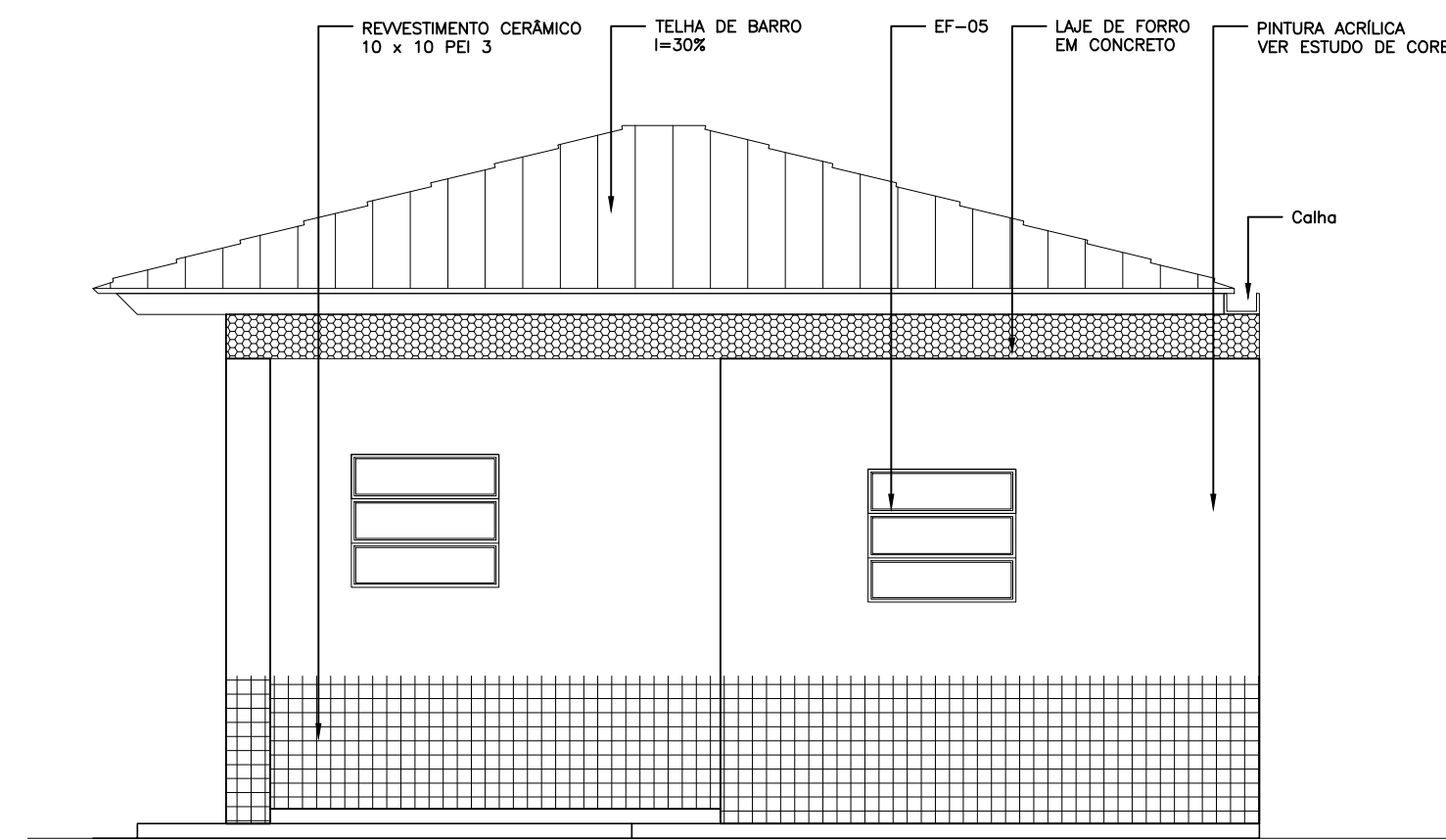
DETALHAMENTO DAS ESQUADRIAS SALA INFORMÁTICA/BIBLIOTECA



6 DETALHAMENTO
ESCALA: 1/75



4 VISTA 1
ESCALA: 1/75



5 VISTA 2
ESCALA: 1/75